



RAFFLES GIRLS' PRIMARY SCHOOL

Weighted Assessment (SA1) 2020

Section A	10
Section B	15
Your score out of 25	
Parent's signature	

Name : _____ Index No.: _____ Class: P4 ___ Date: _____

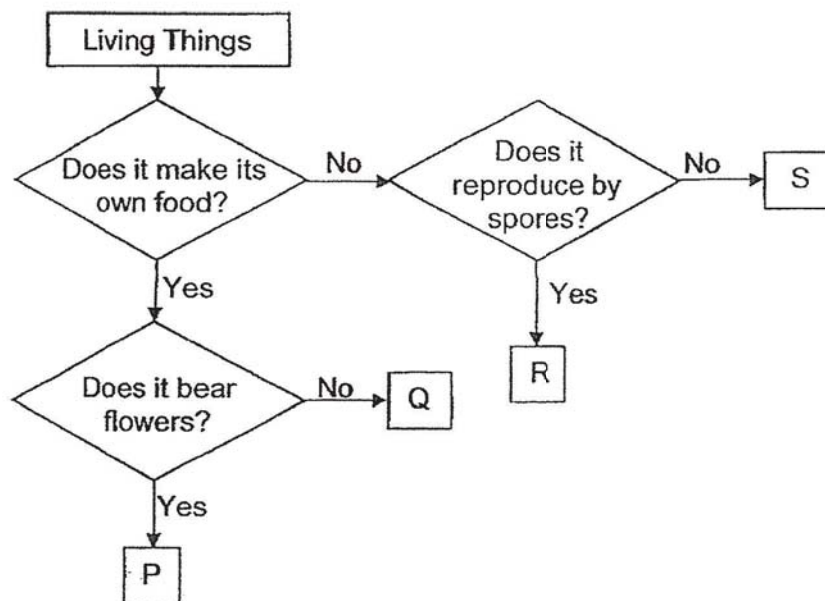
SCIENCE

ATT: 50 min

SECTION A (5 x 2 marks)

For each question from 1 to 5, four options are given. One of them is the correct answer. Make your choice (1, 2, 3 or 4). Shade the correct oval (1, 2, 3 or 4) on the Optical Answer Sheet (OAS) provided.

1. The classification chart shows how some living things are classified.

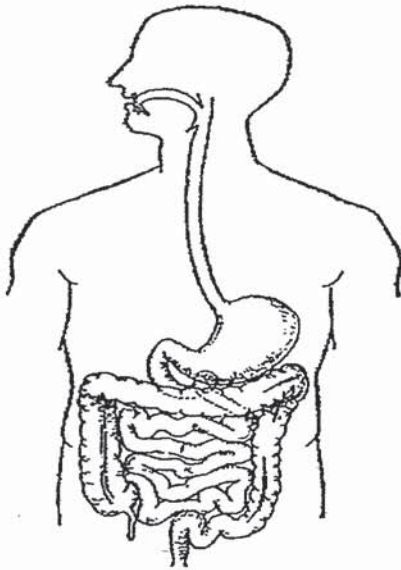


Which one of the following living things represents ferns?

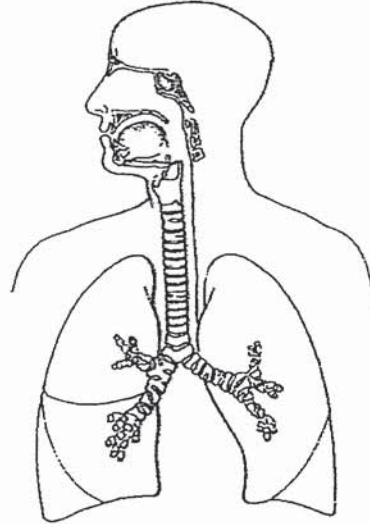
- (1) P
- (2) Q
- (3) R
- (4) S

2. Which one of the following systems transports oxygen and digested food to every part of the human system?

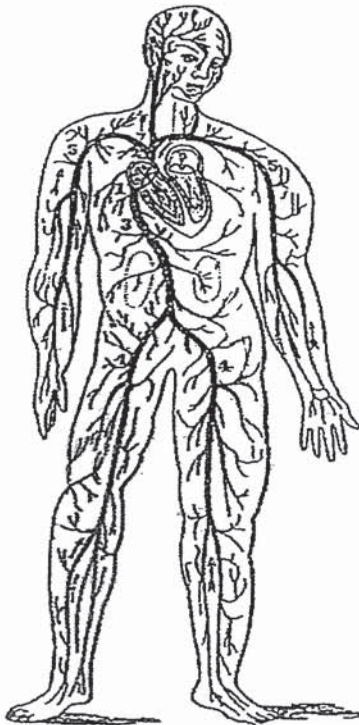
(1)



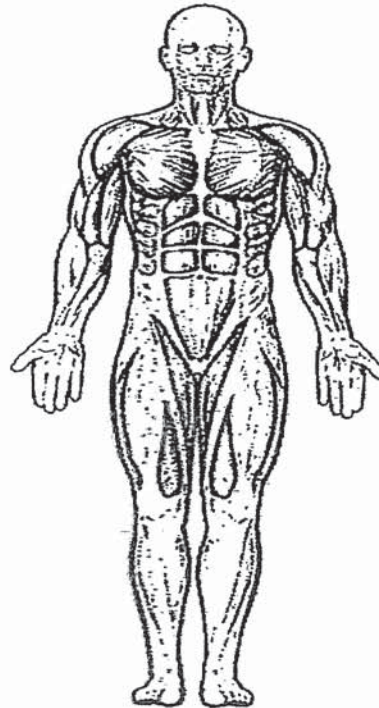
(2)



(3)

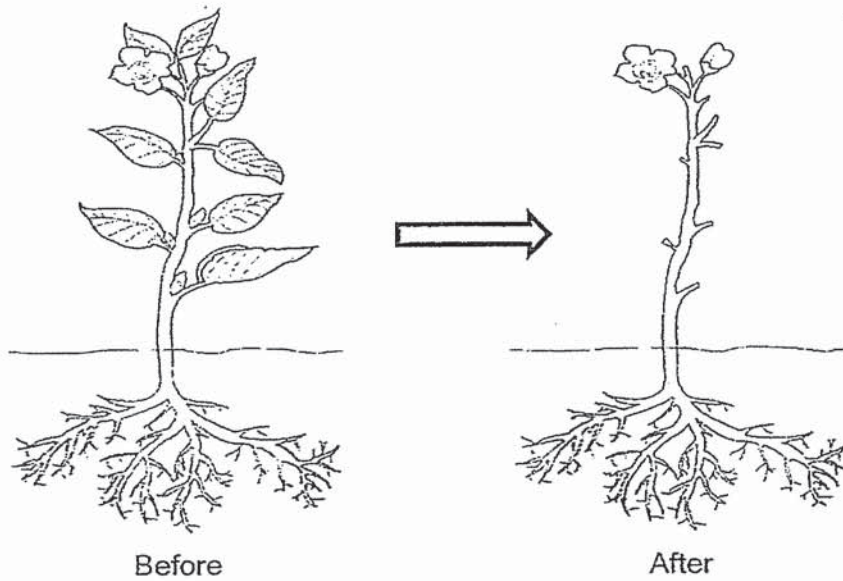


(4)



()

3. All the leaves of a plant were removed as shown in the diagram below.

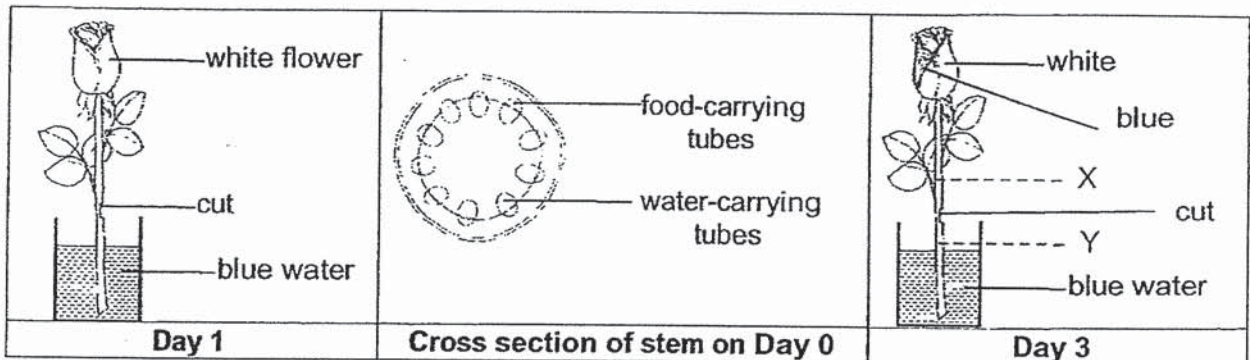


Which one of the following explains why the plant died after two days?

- (1) There was a lack of sunlight.
- (2) The plant was not able to make food.
- (3) The food carrying tube was removed.
- (4) The roots were not able to absorb any mineral salts from the soil.

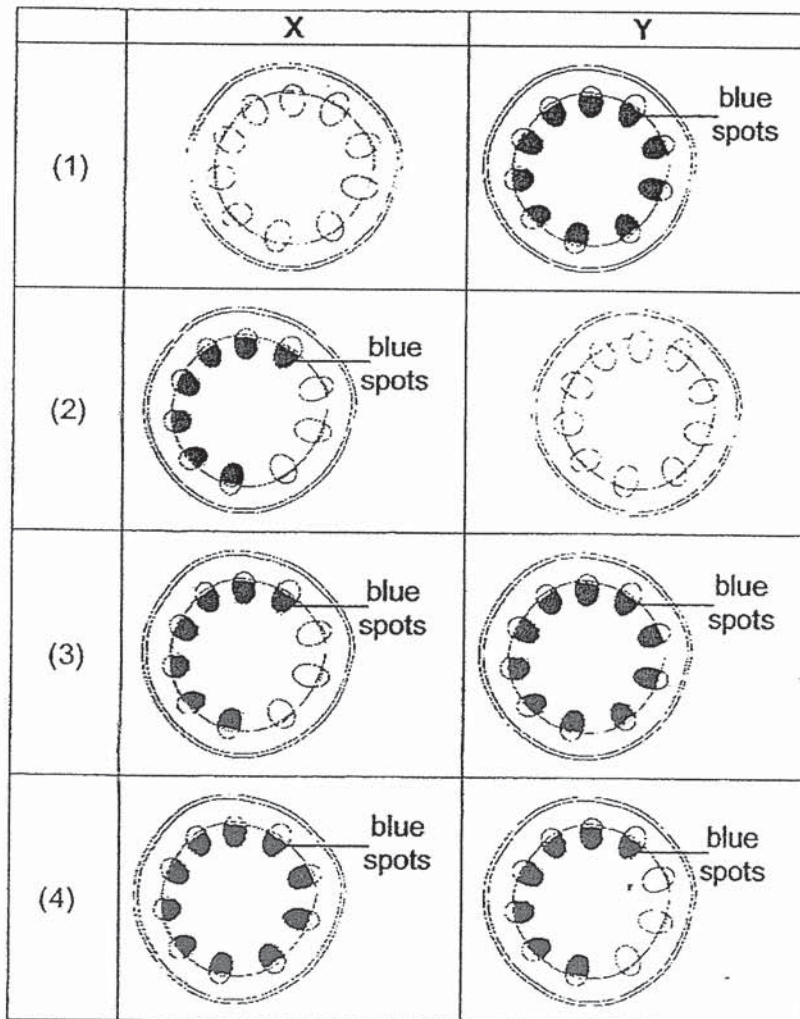
()

4. David made a cut in the stalk of a white flower and placed it in a beaker of blue water as shown in the diagram below. He left the set-up near a window for three days.



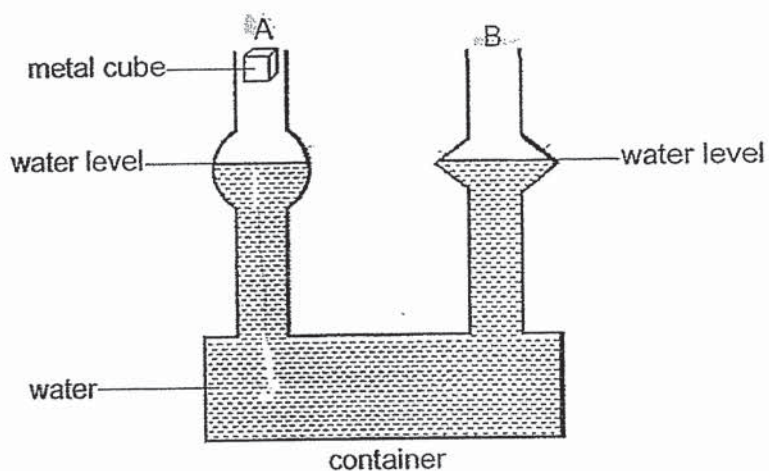
On day three, David observed that part of the white flower turned blue. He made two cuts in the stalk at X and Y as shown in the diagram above.

Which one of the following correctly shows the cross-section of the stem at X and Y?



()

5. Ally filled a container with two openings, A and B, with water as shown in the diagram below.



She then dropped a metal cube into opening A.
 What will happen to the water level at opening A and B?

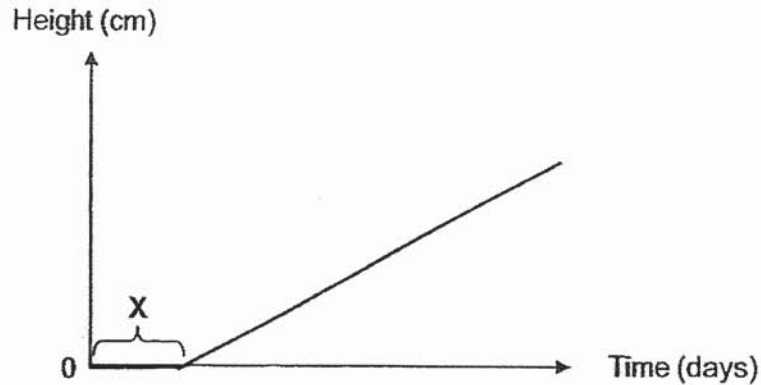
	A	B
(1)	increase	remains the same
(2)	increase	increase
(3)	remains the same	increase
(4)	remains the same	remains the same

()

SECTION B (15 marks)

For questions 6 to 10, write your answers clearly in the spaces provided. The number of marks available is shown in brackets [] at the end of each question or part question.

6. The growth of a young plant Y was measured over a period of time and recorded in a line graph as shown below.



- (a) Name the process that is taking place at X. [1]

- (b) Based on the graph above, what characteristics of living things does the young plant show? [1]

- (c) Mingli observed organism A as shown below and classified organism A as a plant.

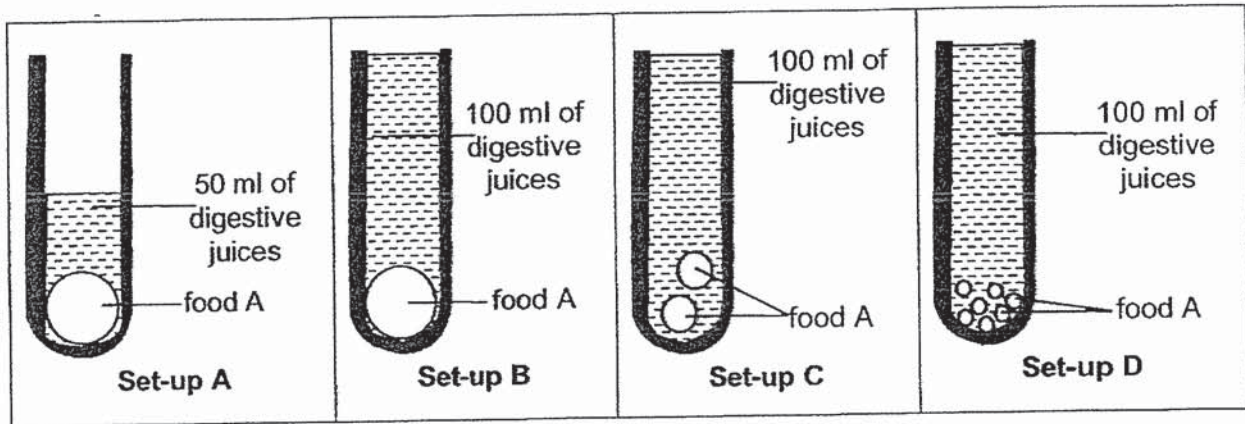


Organism A

- Do you agree with Mingli's classification of organism A? Explain your answer. [1]

Score	3
-------	---

7. Jenny conducted an experiment to find out if the size of food A affects the time taken for the food A to be fully digested. She prepared four set-ups as shown in the diagram below. Each of the set-up had the same mass of food.



- (a) Which of the following set-ups should Jenny use for her experiment?
Give a reason for your answer. [1]

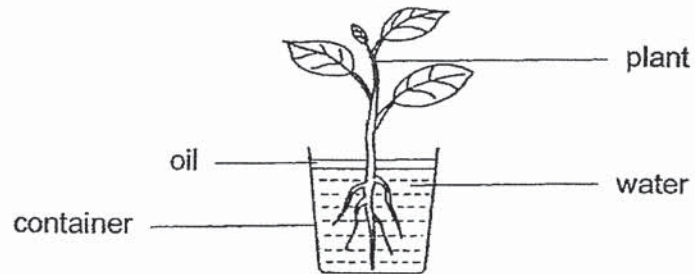
Her results are as shown below:

Result	P	Q	R	S
Amount of digestive juice (ml)	50	100	100	100
Time taken for the food to be digested (min)	30	10	25	20

- (b) Based on the above results, which one of the results, P, Q, R or S, belongs to set-up D?
Explain your answer. [2]

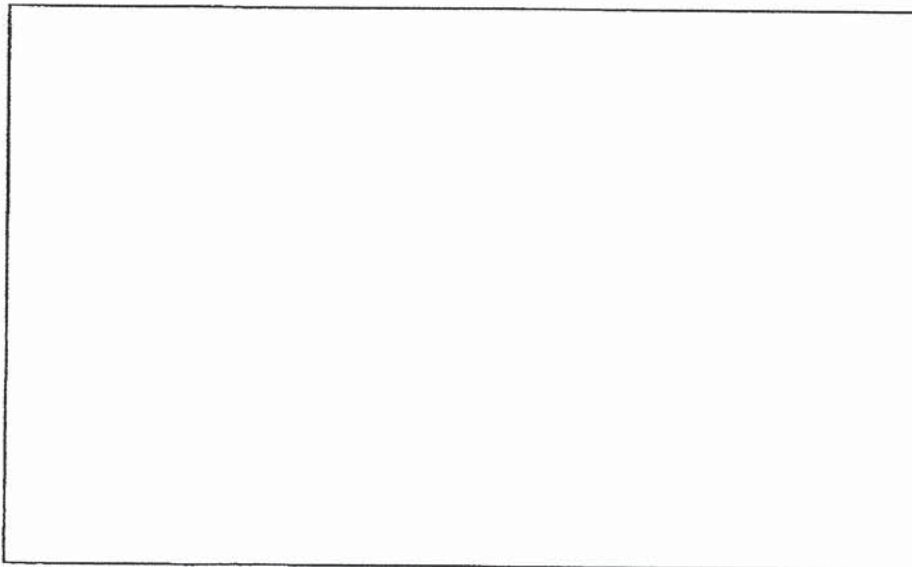
Score	3
-------	---

8. Wendy wanted to find out if plants take in water through its roots. She placed a plant in a container as shown below.



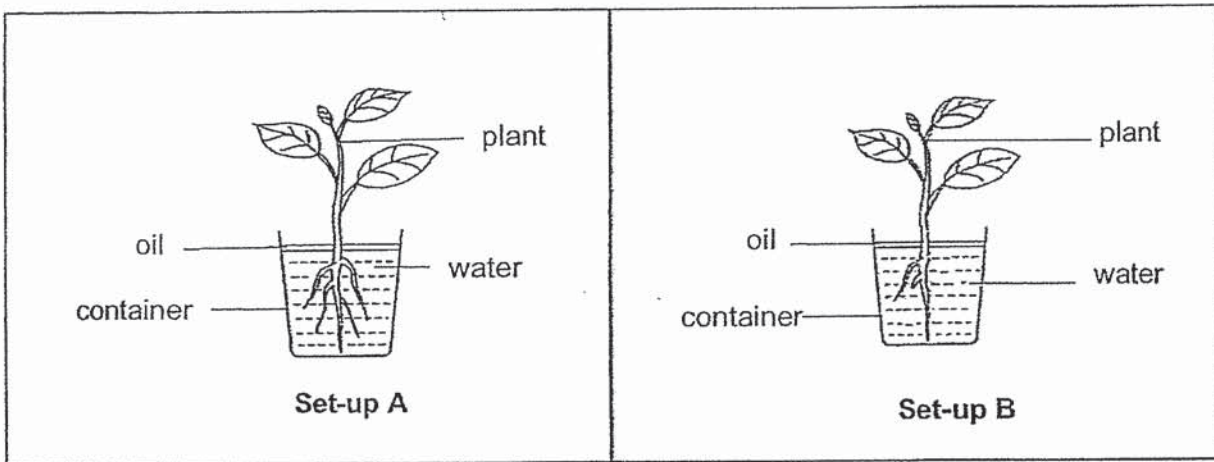
Set-up A

- (a) Draw the control set-up for this experiment in the box below and label the diagram. [2]



Score	2
-------	---

- (b) Wendy placed a similar plant ~~without leaves~~ in a container as shown in set-up B. She then compared the amount of water the plant took in with set-up A.



The table below shows the volume of water taken in by the plants.

Identify the correct set of data that represent the amount of water taken in by the plants in set-ups A and B.

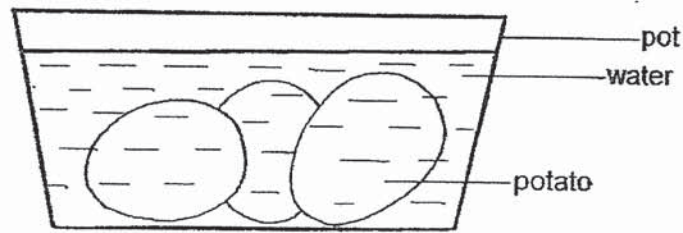
Write A and B in the correct blank below.

[1]

Set-up	Volume of water (ml)	
	Day 1	Day 7
(i) _____	1500	1350
(ii) _____	1500	1450

Score	1
-------	---

9. The diagram below shows potatoes in a pot of water.

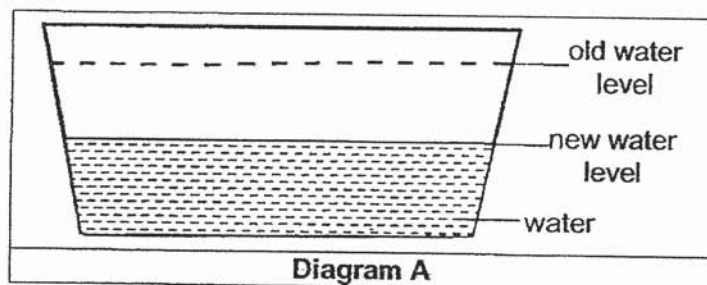


(a) Circle the correct state of matter against the following objects.

[1]

Object		State of matter
(i)	water	Solid / Liquid / Gas
(ii)	potato	Solid / Liquid / Gas

(b) Diagram A shows the decrease in water level in the container after the potatoes were removed.

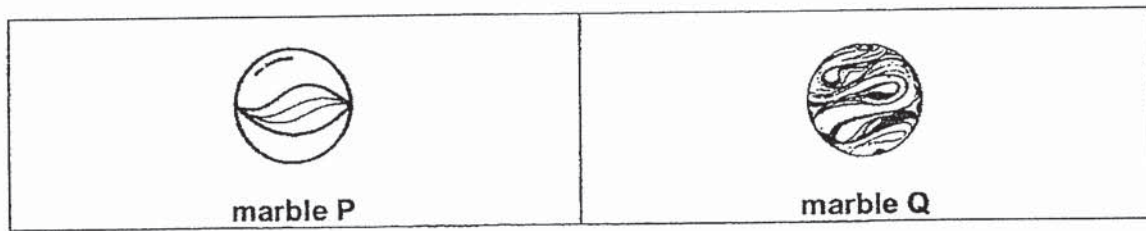


Based on your observation, state one property of the potatoes.

[1]

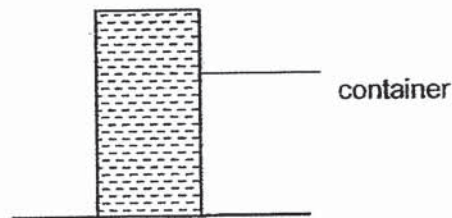
Score	2
-------	---

10. Jaleel had two similar marbles, P and Q, of the same size and shape but they are made of different materials. He measured the volume of marble P to be 20 cm^3 .



- (a) State the volume of marble Q. Explain your answer. [2]

Jaleel placed the two marbles in the container filled with water to the brim as shown in the diagram below.



- (b) What will happen to the water after two marbles were added into the container? Give a reason for your answer. [2]

End of Paper

Score	4
-------	---

2020 P4 Science WA

ANSWER KEY

YEAR : 2020
LEVEL : PRIMARY 4
SCHOOL : RAFFLES GIRLS'
SUBJECT : SCIENCE
TERM : WEIGHTED ASSESSMENT (SA1)

SECTION A

Q1	2	Q2	3	Q3	2	Q4	3	Q5	2
----	---	----	---	----	---	----	---	----	---

SECTION B

Q6 a) germination

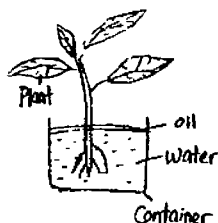
b) Living things can grow.

c) No. Organism A does not have leaves but a plant does.

Q7 a) Set-Ups B and C. The food in each set-up are of different sizes and the amount of digestive juices are the same. The size of food is different.

b) Q. Set-up D took least time to digest food as it has smallest contact surface area with the digestive juices.

Q8 a)



b.(i) A

(ii) B

Q9 a.(i) Liquid

(ii) Solid

b. The potatoes have a definite volume.

Q10 a) 20cm³. Q has the same size as P and so will occupy the same amount of space.

b) The container would overflow. The two marbles occupy space in the container, therefore, the container would overflow.

1
END.